



**CLIMB ON**

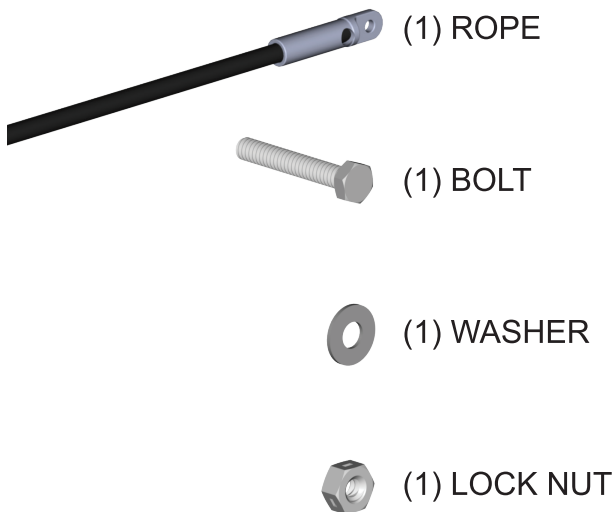
# ROPE REPLACEMENT

READ THESE INSTRUCTIONS COMPLETELY BEFORE YOU START. IF YOU DON'T UNDERSTAND THESE INSTRUCTIONS, PLEASE CALL 800-453-1192 FOR ASSISTANCE

Procedure for replacing the Rope on Little Giant Ladder Systems **HYPERLITE™** and **HYPERLITE™ SUMOSTANCE®** ladders.

1. Failure to comply with all instructions may result in serious injury.
2. Make sure this kit is compatible with your ladder. Before installing this kit, identify all kit components. If any components are missing, damaged or if you have any questions concerning the use of this kit on Little Giant Ladder Systems products, please contact our Customer Experience Team at 800-453-1192. Do not substitute any components.
3. Inspect the ladder before installing this kit. Repair or replace any damaged or missing parts before using the ladder. Use only Little Giant Ladder Systems repair or replacement parts. If you are unable to repair it, discard the ladder.

## COMPONENTS IN KIT

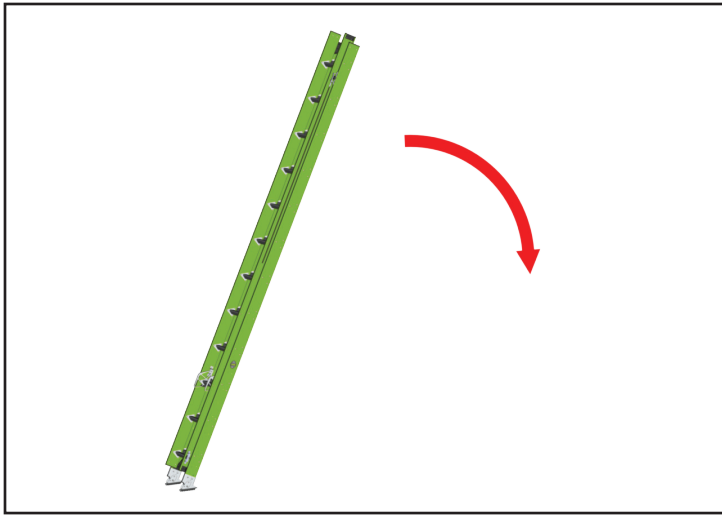


## TOOLS NEEDED

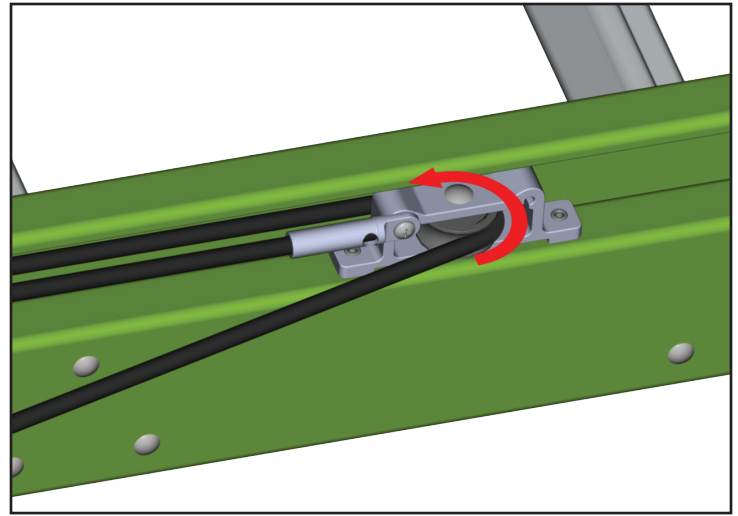


NOTE: IF ANY OTHER PART OF THE LADDER IS DAMAGED BEFORE OR DURING THE PROCESS OF INSTALLING AND/OR REPAIRING, PLEASE CONTACT OUR CUSTOMER EXPERIENCE TEAM FOR ASSISTANCE AT 800-453-1192.

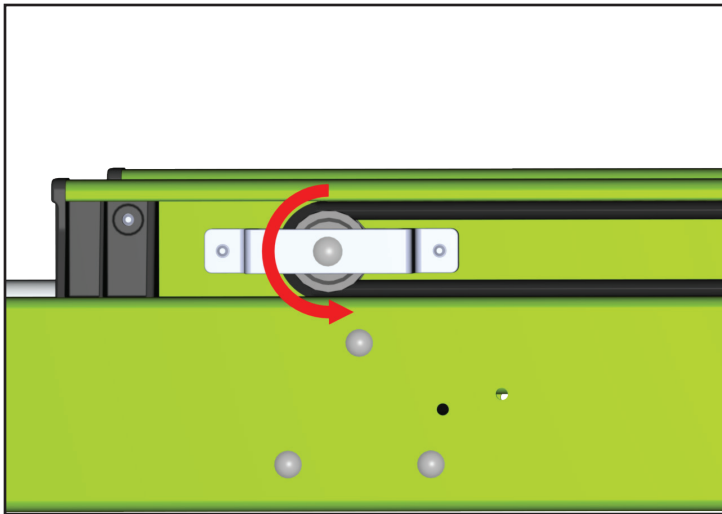
**DO NOT USE A DAMAGED LADDER!**



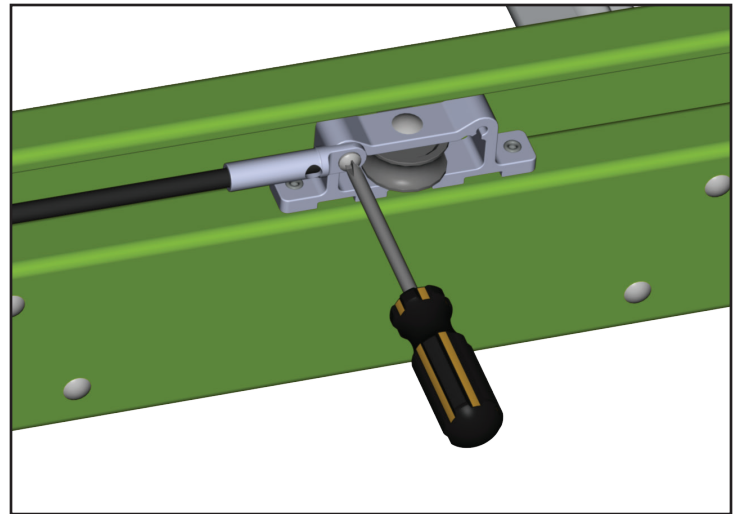
1. Lay the ladder down with the base section facing the ground.



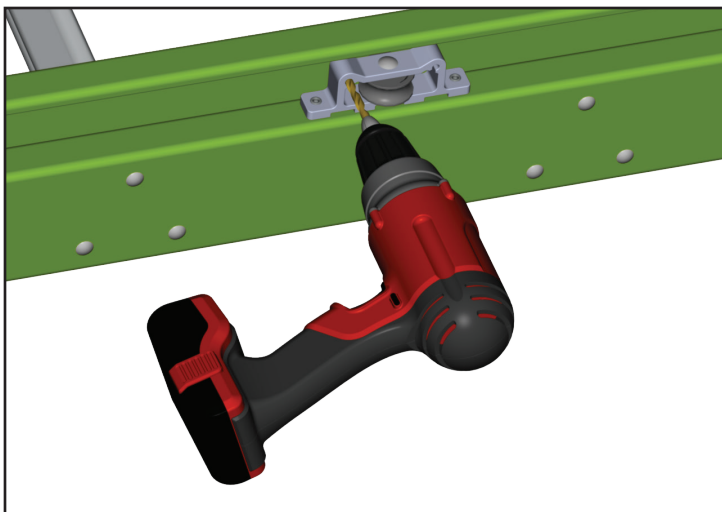
2. Thread the loose end of the rope out of the upper pulley.



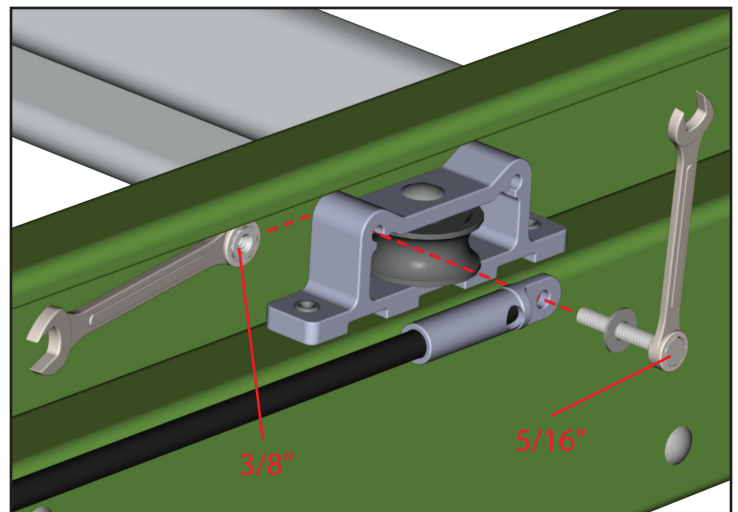
3. Continue threading the loose end of the rope out of the lower pulley.



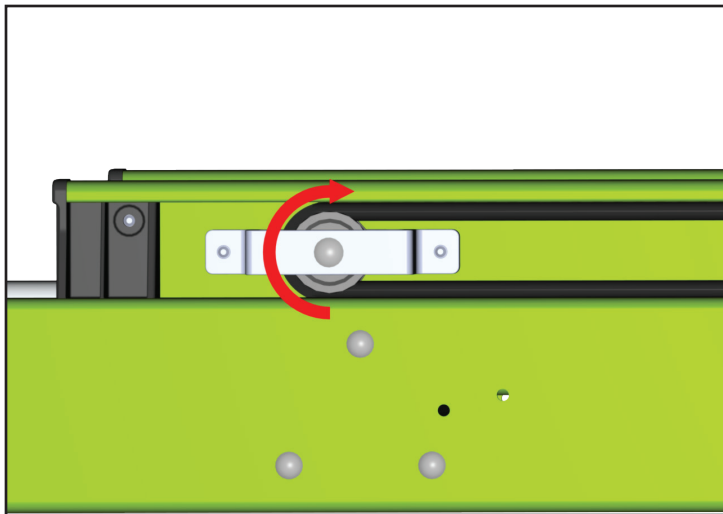
4. Using a Phillips head screwdriver, remove and discard the screw and rope.



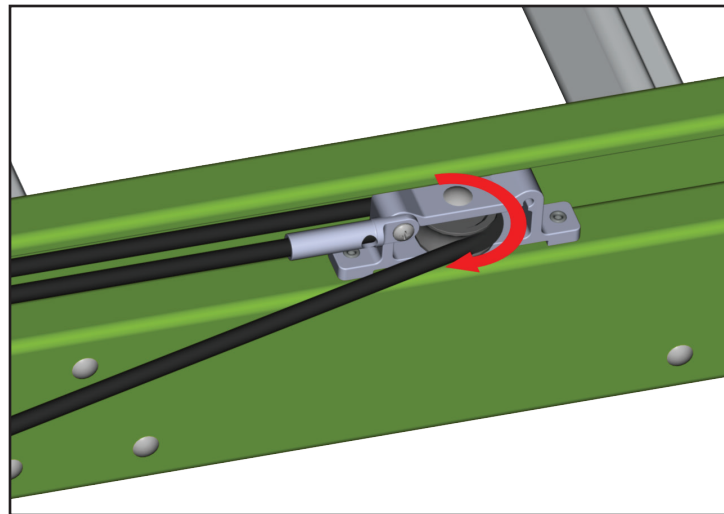
5. Using a 13/64" drill bit, drill out the hole where the old screw was installed. Drill completely through the bracket, but make sure not to drill into the fiberglass on the fly section.



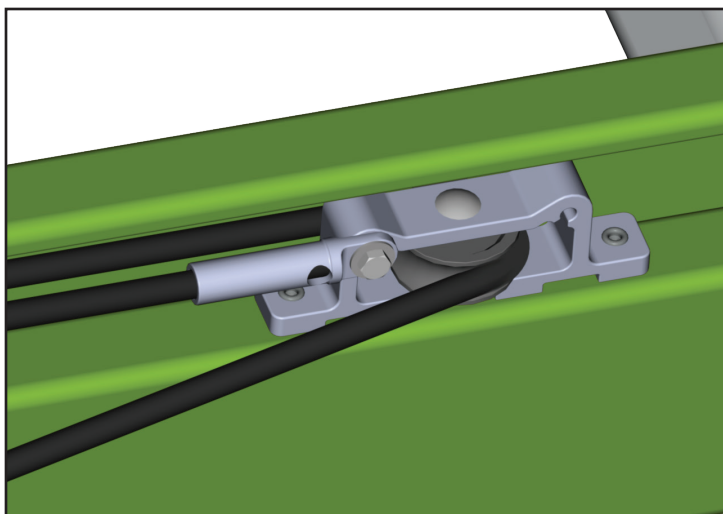
6. Using a 3/8" wrench and 5/16" wrench, install the new rope connector and hardware as shown.



7. Rethread the rope around the lower pulley as shown.



8. Rethread the rope around the upper pulley as shown.



9. Make sure the rope is secure and is functioning properly before use.